



**BLACKMAN
& WHITE**
CUTTING EXCELLENCE

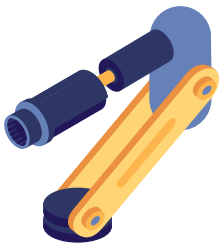


Search 'BW Cutters'

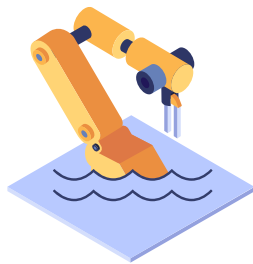
MASTERCUT

Call us
for your
live demo
today!

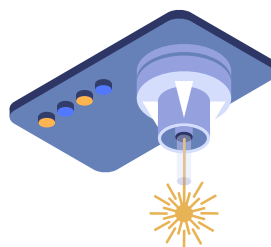
Key features



Performance tool head for thick and dense materials



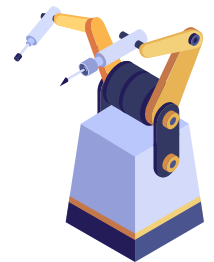
Premium, water-cooled 3.6kW router



Powerful 200W CO2 cooled laser



Modular build that grows with your business



Two independent tool stations

Multiple tooling options

Rotary



Knife



Pen



Laser



Suitable for cutting a wide range of materials

In numbers

- Cutting depth: Up to 120mm
- Cutting speed: 1000mm / second
- Cutting accuracy: +/- 0.1mm
- Available max cutting widths: 7000mm
- Available max cutting lengths: 80,000mm

Tooling overview

We are always improving and adding to our tooling range and the variety of materials they work with. Please contact us about custom or unlisted items and to confirm our latest ranges.

Static tools



DRAW BLADE

- Card
- Gaskets
- Packaging
- Pre-preg
- PVC
- Vinyl



V CUTTER

- Building insulation
- Corrugated
- Foam-centred boards
- Nomex
- Polyurethane
- Rigid structural boards



PRESSURE KISS CUTTER

- Badges
- Depth critical applications
- Heating elements
- Stickers
- Vinyl



THIN / THICK CREASE WHEEL

- Corrugated card
- Corrugated plastics
- Folding box board
- Polypropylene
- Tri-wall

Powered tools



ROTARY KNIFE

- Dry carbon
- Felt
- Glass fibre
- Porous material
- Sail cloth
- Textiles



PNEUMATIC OSCILLATING

- Building insulation
- Foam inlays
- Gaskets
- Honeycomb material
- Rigid structural boards
- Rubber



ELECTRIC OSCILLATING

- Cork
- Corrugated card
- Foam-centred boards
- Foams
- Leather
- Textiles

Marking tool



PRESSURE PEN

- Gaskets
- Packaging
- Paper
- Pre-preg
- PVC
- Vinyl



Performance tools

LASER MODULE

- Acrylics
- Sail cloth
- Signage
- Textiles
- Wood



ROUTER MODULE

- ACM
- Acrylics
- Cured composite
- Plastics
- Polycarbonate
- Wood

See it in action

Scan this QR code with your phone to see the Mastercut in action.

Or visit us online where you can also see our full range of machines, software and tooling options:
blackmanandwhite.com/our-ranges

