



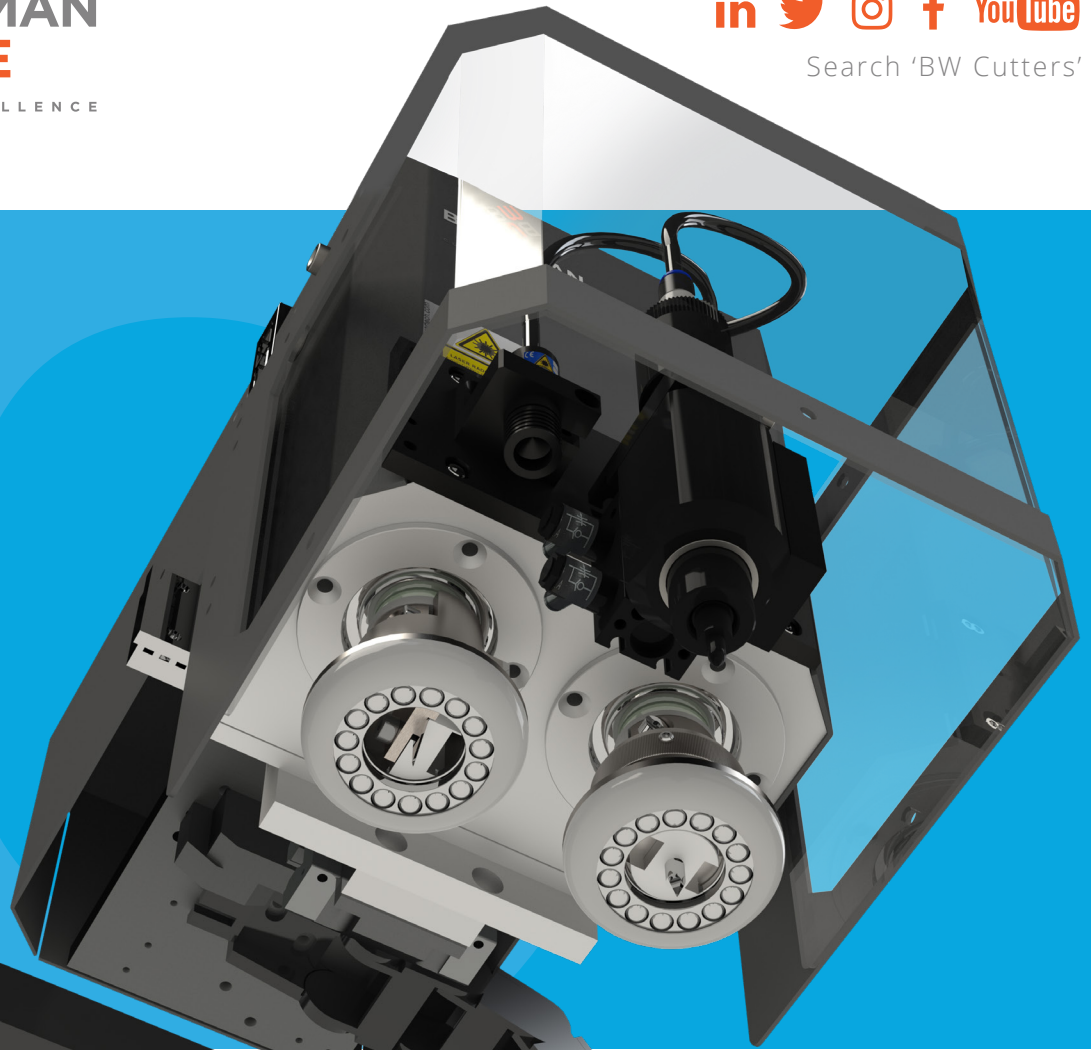
**BLACKMAN  
& WHITE**  
CUTTING EXCELLENCE



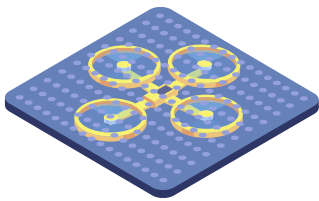
Search 'BW Cutters'

# ORION

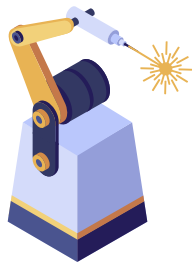
Call us  
for your  
live demo  
today!



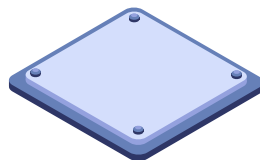
## Key features



Complete  
vacuum zoning  
system



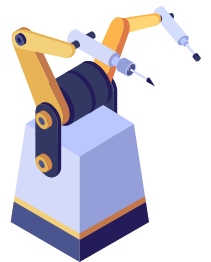
Laser pointer  
equipped for  
total accuracy



Static working  
area for accuracy  
and accessibility



Modular build  
that grows with  
your business



Two  
independent  
tool stations

## Multiple tooling options

Rotary



Knife



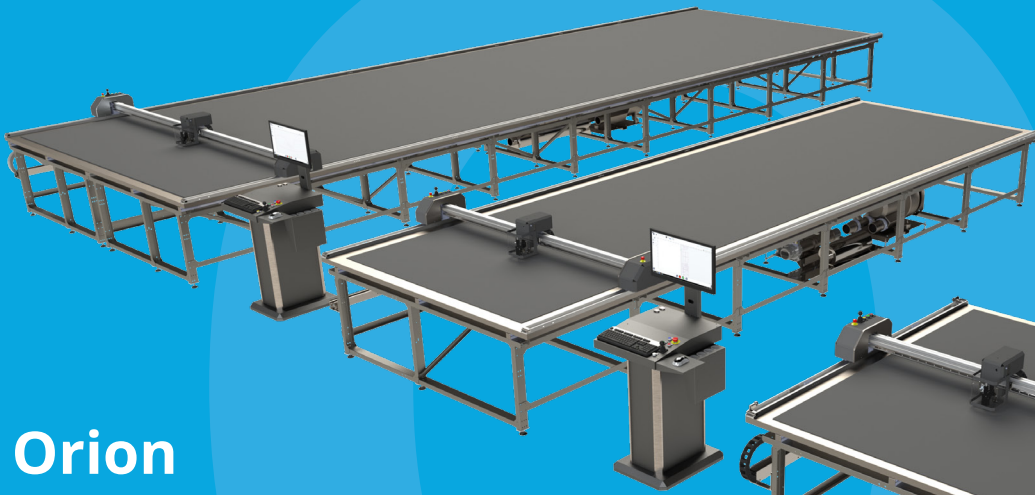
Pen



Suitable for cutting a wide range of materials

## In numbers

- Cutting depth: Up to 10mm
- Cutting speed: 750mm / second
- Cutting accuracy: +/- 0.5mm
- Available max cutting widths: 1600mm, 2200mm and 3200mm
- Available max cutting lengths: Up to 15,000mm



**Modular  
build for  
growing  
business**

## Orion

Perfect for companies looking for an easy to use, low cost and reliable cutting system. Built for high volume production, the Orion is quick and accurate with an unrivalled range of blade and pen tool options in its class.

It has two independent tool stations and a modular build for added convenience and versatility.



## Full specifications

- Dual cutting head with separate pen station
- Vacuum enabled bed securely holds material
- Wide selection of steel and tungsten carbide blades available
- Advanced stepper drive control system
- Large selection of pens
- Modular construction fits all cutting areas
- Suits CAD, Nesting and Photo Digitising apps
- Optional PC station
- Low running costs
- Robust and reliable

## Cutting and marking

- Drag knife with a large variety of long-life blades available
- Pen tool with extensive range of assorted pens and inks
- Rotary wheel which can be mounted simultaneously with the drag knife to reduce setup time and increase your output
- Optional creasing wheel tooling for packaging design applications

## See it in action

Scan this QR code with your phone to see the Orion in action.

Or visit us online where you can also see our full range of machines, software and tooling options:  
[blackmanandwhite.com/our-ranges](http://blackmanandwhite.com/our-ranges)



**BLACKMAN  
& WHITE**  
CUTTING EXCELLENCE

Demonstration Centre  
Unit 7, Heybridge Industrial Estate,  
The Causeway, Maldon, Essex, CM9 4XL

☎ 01621 843 404

✉ [info@bwcutters.com](mailto:info@bwcutters.com)

Head Office  
Unit 8, The Street Industrial Estate,  
Heybridge, Maldon, Essex, CM9 4XB

➡ [blackmanandwhite.com](http://blackmanandwhite.com)